



Bergh Apton Broadcast

Issue 187 Aug/Sept 2023



It seems strange to be writing an editorial that spans both August and September, particularly at the start of the summer holidays. August speaks of fun, entertainment and outdoor days...an expansive time with summer evenings still to be enjoyed. And yet September seems to be the start of the approach to autumn, when we start to reflect, look back at the year and become more introspective. A reminder of seasons; cycles beginning and ending.

Sadly, we have lost two more members of the Bergh Apton community since the last newsletter, and with them shared memories, history and friendships. It is a reminder to enjoy the people we have with us, to reach out to people you may not know well and to make the most of every day.

It seems fitting then that we have a Bergh Apton Festival event coming up on 7th October entitled 'Endings and Beginnings; Dreams Achieved, Dreams Pursued', details of which can be found on P2.

Bergh Apton has its fair share of people living into their 80's and beyond who I see embrace this idea; keeping active and taking on fresh challenges, developing friendships and learning new things. They live their lives still pursuing their dreams. A lesson to those of us still under retirement age.

The word for retirement doesn't exist in the Japanese island of Okinawa, a place known for its high numbers of centenarians. They see no need to retire from what they love to do, and that mental engagement is one of their secrets to reaching the magic 100. If you're wondering about the others.. they speak of 'ikigai', a sense of purpose; they are highly social, meeting in 'moai' to chat and drink together, their spirituality/religion is important to themdoes it remind you of anywhere?

If you still have lots of dreams to pursue, (and Okinawa is a bit too far to travel) then Bergh Apton is the place for you!

Wishing you all a wonderful remainder of the summer and time to sit down and plan those dreams...

Jenny Lovatt

THE VILLAGE SIGN REVIVED

When Bergh Apton's village sign was installed at the junction of The Street and Church Road in September 2004 its paintwork and gilding, executed by the late Ivan Soanes, Norwich-based signwriter and sign designer, was bright and detailed. In early 2023 the Parish Council agreed that, having suffered nearly twenty years of attack by wind frost rain and sun, it needed to be restored to its original vitality.

The work has just been completed by Great Melton signwriter Mike Amiss and the sign came back to the village on Monday 10th July to await to be re-mounted at the top of its post. We should be able to do that in a few days' time, but too late to feature in this edition of the BA Broadcast.

Mike's skill has achieved exactly what we hoped for. He has cleaned and repaired damaged surfaces and restored the delicate and detailed paintwork before finally applying a coat of varnish. The sign should now resist all assaults by the elements for another twenty years.

The good news for Bergh Apton's budget is that South Norfolk Council agreed that the work falls within the parameters of the Community Infrastructure Levy, so there will be no impact on residents as Council Tax payers.

John Ling



The Roman soldiers (on the Beorh Apetune face) pre- and post-restoration

PLEASE NOTE: The deadline for the October/November edition of the Bergh Apton Broadcast is 10th September. Please e-mail news, events and stories to berghaptoneditor@gmail.com

Bergh Apton Fete 2023

Predictions of heavy rain and thunder on 8th July mercifully came to nought!

The sun shone; folk smiled; stacks of tin cans were toppled, rats were splatted, socks were slung, card (and other) games were played, faces were painted, a hamper bowled for; books, cakes, plants, toys, toiletries, and white elephants were purchased in abundance. Bottles, groceries and gorgeous flower arrangements were won on tombolas.

Then there were strawberry teas, Pimms, prosecco and ice cream to be consumed – and the Manor’s secret and fabulous garden to be explored and experienced.

Everyone’s hard work came together to produce a perfect afternoon’s entertainment and activity!

Thanks to the fetchers and carriers of tables, chairs, tentage and sundries; to the poster putter- uppers, to the signage, gazebo and marquee erection and de-rig teams; to the donors, sorters, runners of stalls, tea makers, washer-uppers, bakers, car parkers and the rest – who pulled it all together.

Most importantly, thanks to Kip and Alison Bertram for their continuing hospitality, especially with preparations for their own celebrations to mark Fliss Bertram and Russell de Beer's wedding blessing, which was taking place the following week.

Appreciation also to Peter Cross and Matt Barratt for maintaining the gardens we enjoyed so much and Yelverton Football Club for the loan of their white-line machine for the car park.

And thanks to everyone who came along to enjoy it all! Without you there would have been no point to it all!

We are pleased to report that this year's Fete raised the grand sum of £3274.92 which will be shared between Bergh Apton church and the Village Hall.

If you would like to get to know your fellow villagers, the best way is to get involved! There are all sorts of roles to fill and jobs to do, big and small. If you would like to help next year (it's traditionally the second Saturday in July), drop an email to Shirley Rimmer (sjlr10rav@outlook.com), John Ling (john.ling@btinternet.com) or Jenny Lovatt (berghaptoneditor@gmail.com).



ENDINGS & BEGINNINGS

DREAMS ACHIEVED: DREAMS PURSUED

7th October 2023, Bergh Apton Church

A Bergh Apton Festival 2023 event

Xa Tollemache, (Author, 'A Garden Well-placed')
AND

Hopwood DePree (Author, 'Downton Shabby')

Determination and talent has, and is, producing astounding results for two courageous, creative individuals, pursuing their dreams in parallel.



Xa Tollemache, Member of RHS Council (Author, 'A Garden Well-placed'), set out to design her garden at Helmingham Hall in Suffolk, leading to her winning a Gold Medal and two

Silver-gilts at RHS Chelsea Flower Shows and a successful career all over the British Isles and abroad in designing town and country gardens, both large and small.

Hopwood DePree (Author, 'Downton Shabby') an award-winning and critically acclaimed writer, performer and film-maker from California. He has appeared at many notable stand-up comedy venues, touring the UK with his one-man stand-up show culminating in the Edinburgh Fringe. Hopwood discovered his ancestral home (since 1400s) near Manchester, empty for many years, was in near terminal decline. His dream is to restore it to its former glory.



Both have moved in new directions to achieve their dreams: both have excelled in their new callings. Xa and Hopwood have written their lively and amusing stories in books that they recently presented at the Chatsworth Literary Fest.

On October 7th, they will entertain our audience, as a precursor to a possible US tour.

The evening will raise funds for **Bergh Apton Church** and **Ormiston Families**, a charity working across Suffolk, Norfolk, Essex & Cambridgeshire. Ormiston supports children, young people and their families with mental health issues, young people to cope with the loss of someone significant and those struggling with the imprisonment of a loved one.

For more information:

www.xa-tollemache.co.uk/

www.hopwoodXIV.com

<https://www.ormiston.org/>

<https://berghapton.org.uk/bergh-apton-festival-2023/>



COFFEE MORNING

at Washingford House

Cookes Road, Bergh Apton, NR15 1AA

Wednesday October 11th

10.00am to 1.00pm

Kindly Sponsored by
Johnson Holmes @ Co Accountants
and Barrier Animal Health
In aid of
The Brooke
East Anglian Air Ambulance
With a donation to our church



Book Bugs and Dragon Tails,
Jewellery, Pottery, Cards,
Bags, Christmas Gifts, Stationery, Handmade
Soaps, Bath Oils.

Cake and Tombola stall

Entry £2.50 to include coffee and biscuits
Offers of cakes/tombola/raffle prizes greatly
appreciated

Paris Back and Liz Lester

07900 683 617

parisback14@gmail.com

COMING IN NOVEMBER!

BERGH APTON ARTS

'CRYING LIKE A FIRE IN THE SUN'

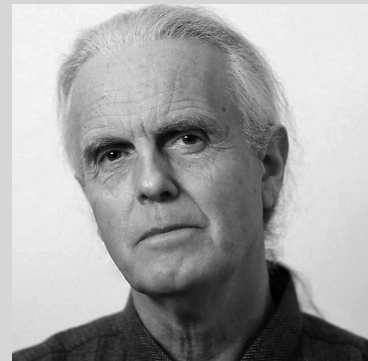
Hugh Lupton, Master Storyteller, writer and poet is known nationally and internationally. He has been weaving his webs of words to lift us into some magic for nearly forty years.

In 'Crying Like A Fire In The Sun' he brings us tales from the Apocrypha and the Old Testament, books silted in stories of miracles and mysteries, tales from a distant world. Like all tales they grow in the telling!

He will tell of Demons, Dragons and Dreams, Angels and Animals, Love and Loss and the Voice from the Heart of the Whirlwind.

Knitted in with these wonders will be music and words of Bob Dylan.

This event is for adults only.



Community Speedwatch sessions are held weekly on Threadneedle Street and Mill Road and volunteers are always very welcome. The team is trained and monitored by Norfolk Police. The purpose of speedwatch is to make drivers aware of the 30mph limit and to increase road safety. A lot of pedestrians use our roads, including children walking to school. The number of drivers caught speeding varies weekly but, overall, the team has noticed an increase in traffic this year. The details of vehicles driven at 35mph and over – reg, direction, speed, make - are sent to Norfolk Police, who send out letters. It is encouraging to see the number of speeding drivers caught on the SAM sign has reduced to 15%. However, the latest data shows the driver caught on Threadneedle Street at 6.40am on 22nd June 2023 was going 60mph!



Thank you, Bergh Apton! Your generosity has contributed a magnificent £562.78 to the work of Christian Aid.



I was sorry to hear that two of our villagers, Gill Waters and John Whittow have both been very poorly recently, requiring hospital stays. I understand they are now back home and recuperating.

On behalf of Bergh Apton, I would like to wish you both our very best wishes for a speedy recovery. Hoping you feel more like yourselves again soon.

Jenny Lovatt

Reverend Cate Turner heads North *by Shirley Rimmer*

Cate joined the Thurton Benefice as Curate in the middle of that most extraordinary year, 2020. By order of the Archbishop of Canterbury, churches nationwide had been locked from 24 th March and had just started re-opening in June and July.

With many folk still nervous about public gatherings, and with more lockdowns looming, fortuitously tech-savvy Cate and her husband, Iain, helped Reverend Chris to introduce weekly services on Zoom.

With Cate and Chris fronting, and Iain as tech support, they became an unbeatable combination!

She presided over the most poignant of Remembrance Days in November 2020, and helped to prepare and present the 2020 Carol Service – when only 30 safely-distanced people were allowed to attend, and no singing was permitted! It was still beautiful.

In and out of lockdowns during 2020 and 2021 and not allowed to sing, it was only in the summer of 2021 that we discovered that Cate has the most fabulous singing voice. Her down-to-earth sermons, often approaching a bible reading from a quirky angle, have simultaneously entertained and informed her congregations and, with the assistance of sidekick, Iain, her services involving children have been especially memorable.

As well as dramatic participant in services and behind the scenes technical support, Iain has been the source of much wry humour and has conveyed countless food donations from our churches to the Norwich Foodbank, where he worked for the Trussell Trust.

Having qualified as Priest in 2021, Cate's training is now complete and, she moves on in August to take up her role as Interim Rector in the Parish of West Buckrose in North Yorkshire. We will miss her and Iain more than they can possibly know and we send them off with our thanks, blessings and best wishes, but will definitely keep them in our thoughts, hearts and prayers.



May 2022, Cate with Ashley Ramsden; providing the blessing of the Jubilee Oak

Enjoy the View!

Steve Whitby

Another new bench has been installed in Bergh Apton - helping to encourage us all to get out and about. This latest bench is on Wrong Lane, the restricted byway that runs between White Heath Road and Loddon Road. It is roughly half way along the track, towards the bottom of the vineyards, with wide views out to Thurton Church and beyond.



Thanks to Hugh Porter and Steve Whitby for installation - the bench was funded out of the Community Infrastructure Levy fund which the village has received as a result of some of the property developments over the last few years.

We have a further bench in plan (on Scop Hill) as well as other investments for the village such as a new marquee. Details will be in the next issue.

TIMBER!

We are used to diversions through the village due to incidents on the A146 but villagers were frustrated on their usual morning route on 30th June when they found a fallen beech tree limb blocking their path on Cookes Road. A rapid response team quickly set to work to clear the debris and allow village life to return to normal. Our thanks go to: Richard Cushing, Nigel Back, Chris Roe, Mark Finegan, Johnny Parfitt and Kevin Parfitt for clearing the way. Refreshments provided by Sandy Schroder & Paris Back.



Parish Partnerships Scheme 2023

Steve Whitby

Each year local councils are invited to submit bids for small highway improvement schemes with Norfolk County Council funding 50% of the cost of successful bids up to £25,000. The kinds of things that could be considered might include:

- Small lengths of formal footway or simplified and low-cost "TROD" footway,
- Improved crossing facilities
- Improvements to Public Rights of Way.

More details are available here www.berghapton.org.uk

If there is something that you would like the Parish Council to consider, then please email clerk@berghapton.org.uk.

'FRESHERS' FAIR'

September is the time for University students to find their way around their new campus, and in Bergh Apton, our equivalent is to find out more about other clubs and societies happening in Bergh Apton, I asked Bob Kerry of the Bergh Apton Conservation Trust (BACT) to tell us a little more...

The history of Bergh Apton Conservation Trust

For almost 30 years Bergh Apton Conservation Trust has been a prominent organisation in the village, but how did it all start? Well, in 1994 the then chairman of Bergh Apton Parish Council, Bernard Bobbin, heard that 4½ acres of wooded ex-gravel workings near the church was likely to come on to the market. In the space of three weeks he contacted everyone in the village he could think of who had some interest in the natural world and might be sympathetic to the idea of a joint purchase of this land, and the consequent formation of a conservation group to run it. He called a meeting of the interested parties and thirteen people pledged various sums to raise the required £4,500. A chairman, treasurer and secretary then came forward to negotiate the purchase of 'Church Plantation' and the charitable trust was set up with eight trustees, each elected for a three-year period, to run it.

We recruited members, most from in or around the village and after taking advice from conservation organisations and ecologists, the trust established a management plan and began regular monthly workdays to implement it and other necessary work. We have been aided in this by work parties from various voluntary groups and Young Offenders.

In 2006 we launched a village-wide appeal to for the purchase of 5½ acres of marshland, alder carr and a pond in the Chet valley, adjacent to the original reserve. We received substantial grants from the National Lottery 'Awards for All', the Bergh Apton Community Arts Trust (then running the Bergh Apton Sculpture Trail) and raised the remainder by local subscription. 'Valley Marsh' was

officially opened to the public in April 2007 by Bernie Bobbin who had started the whole thing off thirteen years earlier.

The Trust was awarded an *Honourable Mention in the Local Group category* 'in recognition of its outstanding conservation work at Valley Marsh and Church Plantation' by the Norfolk Biodiversity Partnership in 2007. Subsequently, we received *South Norfolk Civic Awards* in 2008 'in recognition of the contribution made towards enhancing the quality of the environment'.

Annual cutting of the marsh has been greatly facilitated by the purchase of a power scythe, thanks to a grant from South Norfolk District Council in 2008. In 2010, the Trust featured in '*Putting local wildlife on the map: a practical guide for volunteers, parish projects and community groups on recording wildlife in your local area*', published by the Norfolk Wildlife Trust; we contributed two case studies, one describing the founding and establishment of the Bergh Apton Conservation Trust, and another dealing with the Bergh Apton Hedgerow Project.

Our nature reserve (Church Plantation and Valley Marsh) was designated a *County Wildlife Site* (No. CWS 2222) in 2012. We greatly improved access to the original pond with a pond-dipping platform in 2013, with grant-aid from Norfolk County Council and Bergh Apton Community Arts Trust.

In November 2016, we diversified our habitats by commissioning the digging of a new, groundwater-fed pond, approximately 20 m in diameter and up to 2 m deep, in the valley peat. This was inaugurated for members in September 2017, at a ceremony that also unveiled a memorial bench to

one of our founding benefactors, Phyllis Ride.

In 2020 we were able to extend the nature reserve again by the purchase of the twelve acre "Wellbeck Marsh" with the generous support of Bergh Apton Village Hall, Bergh Apton Parish Council, South Norfolk Council and the Geoffrey Watling Trust thereby giving us ownership of both sides of the River Chet where it runs through the reserve and extending the reserve to 22 acres. After a delay caused by Covid we built two bridges giving access to the new land which was officially opened to the public by Lorie Lain-Rogers, one of the Trusts founder members, at a ceremony that also unveiled another memorial bench to one of our long serving trustees and secretary, Stephanie Crome, who sadly died in 2020.

But the work of BACT has not been confined to just the village as since 2020 we have run the "Chet Valley B-Line" encouraging people to manage gardens and land for the benefit of pollinators over the whole length of the River Chet from Poringland to the River Yare.

In recent years we have had groups from Aviva and Lotus come to the reserve on "Team building" days and our membership has increased to 108. As I write this, we are looking into having parts of the marsh grazed by cattle in the autumn which will be a "first" for BACT.

If you are interested in joining BACT, please contact Tony Davy 01508 558453.



"BERGH APTON's Best Nature Photograph"

"The Green Pastures Nature Photography Competition"

Photographs of anything of the NATURAL WORLD - an invitation to YOU to capture the natural world better than Attenborough.



'Green Pastures', has generously offered a prize for the best nature photograph taken June '23 - June '24.

Entries will be judged anonymously by a carefully selected panel, published in the Bergh Apton Broadcast and displayed in a final exhibiton in the village.

Open to any Bergh Apton Broadcast reader. Please send your entries to:

Christopher Meynell: c.m.meynell@gmail.com

BERGH APTON FESTIVAL ~ 2023

Saturday, 7th October 2023, 7pm

Bergh Apton Church, NR15 1BS

**"ENDINGS & BEGINNINGS"
"GARDENS & HOUSES"**



**HELMINGHAM HALL
& HOPWOOD HALL**

A WRY

DOUBLE ACT!

Direct from CHATSWORTH LITERARY FEST

Xa Tollemache

Garden Designer
RHS Chelsea Gold Medallist
Author

&

Hopwood DePree

US Author, Comedian, Actor, Screenwriter, TV personality

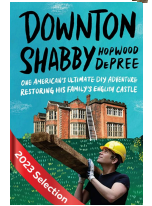
Tickets £12.50 (A special event; do book early)

Via <https://berghapton.org.uk/bergh-aptton-festival-2023/>

Or Telephone: **01508 558440**



In Aid of Ormiston Families
& Bergh Apton Church



BERGH APTON FESTIVAL ~ 2023

The church also has a busy itinerary during the next few months, with BAF 2023 events in August, September and October, as well as a BACAT-sponsored performance in November. Details of the BAF 2023 events below:

The **Pot of Gold Shanty Crew** got BAF23 off to a rollicking start on 20th May.



Their popularity on the national shanty circuit is well-deserved and they entertained us with plenty of well-known songs to invite a rousing audience participation, as well as some home-grown arrangements.

They have a busy itinerary for the rest of the year, so do check out their website, <https://potofgoldshantycrew.co.uk>, and catch them when you can.



On **Saturday 2nd September** (7pm) we'll enjoy 'An evening with Louis de Bernières'

Possibly best-known as the author of Captain Corelli's Mandolin (the book is infinitely better than the film - I've read/seen both!), Louis is known for so much more:- Author, musician, poet, storyteller, raconteur, all-round entertainer.

Join us for what promises to be a fascinating and entertaining evening - with or without a mandolin!

Parking and refreshments included. Tickets £12 by phone 01508 480576 or online via <https://berghapton.org.uk/bergh-aptton-festival-2023/>

Coming up on **Saturday 12th August** (7pm) we're looking forward to welcoming **Norwich Harmony**.



They're a ladies barbershop chorus, and a member of LABBS (Ladies Association of British Barbershop Singers). Their amazingly diverse repertoire ranges from 'A Nightingale Sang in Berkeley Square' to 'That's Life' (made famous by Frank Sinatra) through to Queen's 'Bohemian Rhapsody'!

Currently under the directorship of Alison Thompson, Education Director for LABBS and a singing judge, the group sings a cappella, in close 4-part harmony - Tenor, Lead, Baritone and Bass.

Great sound!

Parking and refreshments included.

Tickets £10 via telephone 01508 558440 or the Eventbrite link on our website

<https://berghapton.org.uk/bergh-aptton-festival-2023/>

MARIA VLASTA PHILLIPS MBE (1931-2023)

Obituary words by John Ling

Maria Phillips MBE, who died at her home 'Fieldside' on Threadneedle Street on 27th May at the age of 91, came to live at Mere Farm House on White Heath Road in 1987 with her husband, the late Canon Geoffrey John Phillips (always known as John) soon after John retired.

The arrival of this dynamic lady of small stature but huge personality and drive heralded a period of almost thirty years of enthusiastic support for the life of the parish church and its community and for the artistic life of the village. Together with Pat Mlejnecky, as a result of Pat's innovative thinking on how the Arts could flourish in a small village, Maria was one of the initiators of the Sunflower Trail of September 1994, an Open Gardens event that heralded the six hugely-successful Bergh Apton Sculpture Trails between 1997 and 2011 in which tens of thousands of visitors came to the village to view (and buy) the works of professional sculptors in private gardens.

Of greater value to Bergh Apton's soul, the Trails aroused the creativity of Bergh Apton's residents in music, theatre and many other art forms, fostered and funded by what became the Bergh Apton Community Arts Trust, now known as Bergh Apton Arts, alive and active today.

Maria, baptised Maria Vlasta Stallerova, was born in November 1931 in Brno Czechoslovakia. She was the daughter of Jan Staller, businessman, brewer and engineer and his wife Maria who had properties in Moravia including a hotel. Jan also ran the Starobrno brewery, founded on the 14th century and still, owned today by the Heineken Group, a major business. Maria with her parents and her elder brother Jan lived through the uncertain political times of the



Maria, John, Richard, Sarah and Michael, in about 1961, the year

1938 Sudetenland crisis and survived the Second World War but, in 1948, the family was forced to leave the city in the wake of the Communist take-over of their country.

Maria, at the age of seventeen, escaped on foot with her brother Jan, mother and aunt, over the

mountainous border country into Austria where the family was reunited with father Jan and travelled together to Switzerland. This harrowing experience may be a contributor to Maria's determined character, of which those who knew were in awe. In Switzerland Maria spent a year learning the English language that enabled her to find work as an au pair in London where she passed the equivalent, in those days, of 'A' level in subjects including Bio-Chemistry.

According to family legend (but hotly disputed by Maria!) a chance meeting involving a broken-down car brought wartime RAF flyer Geoffrey John Phillips (RAFVR) into her life. John's aircraft had been shot down over Holland returning from a raid on Germany in 1942 and he had survived three years as a POW before returning to post-war England to qualify as a solicitor and practice

in Walton-on-Thames.

John and Maria married in Marylebone in the Autumn of 1953 after which life took a different direction with John's decision to give up the law to study for the priesthood at Ridley Hall in Cambridge. Family life changed too with the arrival of Richard in 1955, Rachel (who did not survive) in 1957, Sarah in 1958 and Michael in 1961.

Following curacies in Kettering and Tideswell (in Derbyshire) John became Port Chaplain for the Mission to Seamen in Colombo, Ceylon (1961-1964) before returning to UK as Rector of Geldeston, Gillingham and Stockton in Suffolk (1965-1969), then of Eaton in Norwich (1970-1981). His final post before retiring in 1987 was in Vienna where he was Chaplain to the English-speaking communities of Vienna, Prague and Budapest. In all these posts Maria not only supported John's work, but took numerous initiatives to improve the welfare of people with whom she came into contact.

Residence in Vienna brought Maria close to her family home in Brno and a visit with John and Michael to her home city, in the dying days of the Czech Communist regime, allowed her to recover some items safeguarded all those years by a former neighbour and the balance of a bank account in her mother's name that she cashed, but in non-convertible local currency that was valueless outside Czechoslovakia.



Maria, captured by the artist when she was in her early thirties.

Michael remembers Maria resolving that problem by buying jewellery to the value of the cash and wearing it to cross the Czech-Austrian border. The return journey was not without incident because soldiers, thinking they might have stopped to take a photo of a military establishment (the object of Michael's interest was, in fact, a billboard in the foreground of the photo) arrested them. They questioned John and Michael in the guardhouse of the establishment but, eventually satisfied that they were innocent, released them. What they missed because Maria had resolutely refused to leave the car was that, quite illegally but in plain sight as adornments, she was carrying to freedom the value of her mother's savings! Settled in Bergh Apton Maria joined the Norwich team of the Citizens' Advice Bureau (CAB) where she became involved, at a national level, with setting up a CAB service in her native Czechoslovakia after the fall of Communism. Her work in this field, and the success of the CAB office in Prague, was recognised by her appointment as a Member of the Order of the British Empire (MBE) in the New Year's Honours List of 2002.

In 2004 Maria and John, who died in 2014, moved to Fieldside on Threadneedle Street where Maria's long, eventful and fulfilled life, supported in the last five years by a dedicated team of carers, came to a peaceful end.



Maria and Michael in the kitchen at Fieldside in 2010.

BAR STEPHENS RIP

Bar Stephens, late of Bergh Apton House on Loddon Road and widow of N&N surgeon John Stephens, died at the age of ninety-nine years and five months on 29 th May.

Few people of such a grand age can expect a full church of friends and admirers at their funeral but such was Bar's character and wide range of interests that Bergh Apton's church had little space left for those wanting to celebrate her life. Her funeral was too close the deadline for this August edition of the newsletter to include an obituary of this remarkable lady so it will appear in the October issue.

John Ling

VACANCY - PCC Secretary

Following the retirement of Mrs Pat Waters after many years of service, the Parochial Church Council of St Peter and St Paul's is looking for someone from within the community to serve as Honorary Secretary.

The role is not onerous but is an important one in the proper functioning of the council. Duties involve taking minutes at the meetings, writing occasional letters/emails in response to matters raised and acting as a 'post box' for correspondence from the Diocese.

The council meets on four occasions each year. If you feel you might have the skills and time to offer to this voluntary role, or you would like to find out more, please contact one of the churchwardens: Shirley Rimmer (01508 480576) or Lorie Lain-Rogers (01508 484055).



'Errata'

In his excitement at taking on the role of Chair of the Parish Council, Steve Whitby omitted to include Ian Ratcliff in the list of continuing Councillors. Apologies have been sent on to Ian for this omission.

A fabulous sight, captured by Tony Davy ...



A brilliant display of poppies in the Chet Valley (Wellbeck Road) and an excellent resource for pollinators. Thank you, Robert Waters, for not cultivating this field this year! This phenomenon was immortalised by John McCrae in his poem In Flanders Fields, and has come to symbolise the losses of the First World War. Poppy seeds, famously, can lie dormant in the soil for decades, awaiting their moment in the sun. Each flower on average will produce more than 1000 new seeds.

Thank-you to all our regular contributors who keep us up to date with the clubs and societies in the village. As of 2021, we had 471 residents in the village so there are at least 450 of you that I would still like to hear from! If you would like to share your news, photos, poems, hobbies or memories, do get in touch at berghaptoneditor@gmail.com by 10th September. (Editor)

MOBILE LIBRARY IN BERGH APTON

I have been considering whether we can improve any services for Bergh Apton residents and need your feedback please?

The mobile library currently stops for ten minutes at Church Road Bungalows, NR15BP on a Friday every 28 days, the last recorded visit online being 16th June.

I have not been able to find the user(s)/reason for this particular choice of stop and was wondering if a move to the Village Hall where there is parking and a suitable place to stop might be more suitable to allow more users to benefit from this service.

If you have any thoughts/comments, please let me know as a new person is in charge of this service and is keen to respond to our requests if it encourages use of the service.

The library carries a small selection but can bring reserved books, and return books from any Norfolk library, which may be useful if you find transportation and carrying heavy books difficult.

For those interested, the link for the route is:

<https://www.norfolk.gov.uk/-/media/norfolk/downloads/libraries-and-local-history/mobile-library-timetables/cen-522.pdf>

We are stop 10 on route CEN522.

Jenny Lovatt

Getting to know you...



The Editor talks to John Whittow, resident of Bergh Apton and author of more than sixteen books on environmental topics. His book, 'The Edge of the Land', written in 2017/18, captures one aspect of his work, recalling memories of his enchantment with the coast of Britain and Ireland.

JL: For a man who has spent so much of his life exploring coastal or mountainous regions, how does

Bergh Apton compare?

JW: It was quite a change for us, moving to the lowlands of Norfolk. When Diane (my wife) and I moved here in 2017, Norfolk's landscape was such a contrast to the rugged Celtic shores of Western Britain and Ireland which I had fallen in love with decades before, but we felt the need to move closer to our daughter Fiona (who lives with her family in Norwich). We have embraced the change and made new friends in the village, who have kindly welcomed us.

JL: You have a link with Norfolk already though I understand?

JW: Yes, I have worked with the National Trust for over 50 years and because of this, they kindly named the rangers boat at Blakeney Point, the 'Whittow' so we have been able to visit and take trips out on it.

JL: In your career, you have advised not only the National Trust but the Forestry Commission, Buckinghamshire County Council and the Institution of Civil Engineers on environmental issues. What will be the lasting legacy of your work?

JW: In 1964, the National Trust commenced 'Enterprise Neptune', an initiative to acquire areas of coastline for protection, primarily to prevent further post-war development. To decide where to target they initiated a survey and I was tasked with the job of mapping the entire coastline of England, Wales and Northern Ireland (although not Scotland) amounting to 3500 miles (which later turned out to be nearer 8000 miles!). I gathered a team of 30 graduates and fellow academics from the University of Reading where I was a Professor and over three months of the summer of '65 we divided the coastline into 100 mile sections and recorded our observations, creating 350 fireld survey maps. Over the next year, these were finalised into a report per County enabling the Trust to make a plan and launch a massive fundraising appeal to purchase the areas I identified as suitable for protection. This has helped to protect large areas of diverse coastline as well as ensuring the general public can still broadly have free access to enjoy it. To date, the National Trust has managed to secure around 780 miles of the 900 miles I originally proposed so I think that will be my legacy.

JL: I understand the University of Leicester have recently repeated the survey for the NT's 50th anniversary of Enterprise Neptune?

JW: Yes, but they did, but they were able to use Google maps - technology made it far quicker and more efficient!

JL: So what areas were saved?

JW: Since 1965, Neptune has raised tens of millions protecting areas of coastline for the general public to enjoy including the Seven Sisters, Rhossili Bay on the Gower peninsula, vast stretches of Northern Ireland's Antrim coast, Robin Hood's Bay in North Yorkshire, The Needles on the Isle of Wight and Studland and Golden Cap in Dorset. The Durham coalfields which closed in '93 were thought to have made the coastline beyond redemption but 5 of the 12 miles are now owned by the National Trust and pristine again. The only place that sadly escaped purchase was Portland Bill, Dorset which remains in private hands - unfortunately the price required was too high for

the former quarry site, where Sir Christopher Wren sourced the Portland stone used in the building of St Pauls.

JL: So, where did it all begin for you?

JW: My family lived in the Midlands, although holidays always took us away to the coast; from my earliest memory of a visit to my father's birthplace in Pembrokeshire to Blackpool or Skegness to the more rugged coastline of Rhyl, where as a small boy I played in the dunes and first observed the changing nature of the coastline as the wind shifted the sands. I also have fond memories of trips to Cornwall, Sussex and Devon. Later as a teenager, my interest in rocks and pebbles began prompted by my observations of specific red, brown and white pebbles I found on the beach shingle at Llandudno. I later went on to study Geology at Higher School Certificate, and Geography as an undergraduate at Reading. Later in my career I moved into becoming a Glaciologist and Environmentalist.

JL: Tell me more about your glacier work ...

JW: In 1957, we obtained a grant to map the Rwenzori mountains, a glacial range rising to 17,000 feet between West Uganda and Congo. Local labour built huts for us in the mountains so we had a base whilst we surveyed 22 of the 43 glaciers that had originally been identified back in 1906. Our processes were very manual back in the fifties, photographing and measuring off stakes to create a series of contours off the peak, mapping it for future generations. Now, sadly only 4-5 of these remain, an indication of the rate of melting due to intense heat and sunlight.

JL: You have written another book 'Anatomy of Environmental Hazards', tell me more...

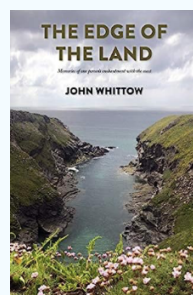
JW: Yes, this was a Penguin publication I wrote in 1980 focussing on how natural forces were inflicting damage on the world and how people were trying to react to it. It was looking at air pollution, the acidification of soils and the ozone layer, before these subjects were really in the forefront of people's minds. One of the chapters was titled 'Disaster City', based on my observations of when we were living in Los Angeles in 1961, which I identified as having 10 of the 12 environmental hazards I identified such as drought and earthquake. It got into the top 10 bestsellers and resulted in me being broadcast on American radio when I didn't realise I was on a live interview!

JL: You sound like you have had a very interesting life, is there anything you would have done differently?

JW: No, this was always my first love although I could have taken a different path. I read Geography as an undergraduate but also had to read a language and one other subject, for which I chose medieval history. My first year exam paper was read by the Vice-Chancellor (an eminent medieval historian) who told me that this was my forte and that I should change course. I decided not to pursue it, but esuaged my choice by writing my first historical novel, 'A Man from Flanders', which has received a great response from local author Patrick Barkham. It is a combination of historical research, fact and family history and became my project for three months whilst I was recovering from a broken leg!

JL: And finally, what is your favourite area of coastline?

JW: Pembrokeshire, for sure, although I do also have a love of the Hebridean coastline; it's the jewel in the crown.



JL: Thank you John, it's been lovely to talk to you. I have had to squeeze our long conversation down to 1 page but if you would like to read more of John's work, they can be sourced here:

***The Edge of the Land* <https://riversidepublishingsolutions.com/product/the-edge-of-the-land>
A Man from Flanders* <https://www.waterstones.com/book/9781913012946>*

Bergh Apton Horse & Fun Dog Show 2023

After the heatwave that forced the cancellation of the 2022 Show, it was a huge relief to have a dry and coolish May bank holiday for the 2023 show.

However, like so many 'best laid plans', something had to go wrong and this time it was a burst water main on the A146 that complicated the journey to Bergh Apton for so many. Hearty congratulations to everyone who managed to negotiate the myriad 'Diversion' signs that sprang up on nearly all the approach roads...a scary prospect when travelling with horse boxes and trailers.

Despite the difficulties, over 50 competitors made it to the show, participating in multiple classes.



Ours is a friendly country horse show, offering high quality showing classes as well as the opportunity for children and novices to gain experience and

confidence – and the Fun classes are always popular, as is the dog show.

It was Milton Harris's inspiration over 25 years ago that gave birth to the event, and he still works tirelessly to keep it going.

Thanks, as always, go to Kip and Alison Bertram for their generosity in allowing the invasion of their wonderful grounds for the event, to Peter Cross and Kevin Parfitt for the mowing of the rings and to the Halesworth and District Riding club for taking all the online equine bookings. Trying to mention all who contributed to the success of the day is a dangerous undertaking, as someone is bound to be omitted, but Milton deserves a special mention.

£844 was raised for church funds.

THURTON FLOWER FESTIVAL

The Friends of Thurton Church are holding a flower festival at St Ethelbert's Church, Thurton 15th-17th Sept. The theme is 'Flowers in Royal Splendour' depicting the reign of Queen Elizabeth II to King Charles III.

Fri 15th - 'The Fine City Chorus' singing at 7pm, followed by wine, soft drinks and refreshments. Tickets £12

Sun 17th - Songs of Praise at 4pm

Festival open 10am - 5pm.

Can you help by making a cake, or help serving refreshments and stewarding in the church? If so, please contact Lynton Johnson 01508 480629 or Gillian Ducker 01508 480075.

COOK'S CORNER

We are so short of space this edition, I have included one of my family favourite recipes, but unfortunately no space for the photo...(Editor).

Please send your recipes for the next edition!

CAMOMILE & HONEY OLIVE OIL CAKE

Makes a 20 cm (8 inch) cake

- 125 ml (4 fl oz/½ cup) milk, plus extra if needed
- 3 tablespoons chamomile flowers or 4 chamomile tea bags
- 250 g (9 oz/1⅔ cups) self-raising flour
- 150 g (5½ oz/⅔ cup) caster sugar
- 1 teaspoon baking powder
- a generous pinch of salt
- 250 ml (9 fl oz/1 cup) mild olive oil
- 70 g (2½ oz) honey
- 3 eggs

For the lemon icing

- 150 g (5½ oz) icing sugar, sifted
- finely grated zest and juice of 1 lemon
- a splash of milk

1 Preheat the oven to 160°C (315°F).

2 Oil a 20 cm (8 inch) round cake tin and line the base with baking paper.

3 Pour the milk into a small saucepan and gently warm through without letting it reach the boil, then remove from the heat and add the chamomile flowers or tea bags. Set to one side for a good 10 minutes so the milk and chamomile can infuse and cool.

4 Now, whisk together the flour, sugar, baking powder and salt in a large bowl. In a separate bowl, whisk together the olive oil, honey and eggs.

5 Strain the chamomile flowers from the cooled milk, or remove the tea bags, and measure how much milk you have – you need 125 ml (4 fl oz/½ cup), so add more milk if necessary.

6 Stir the infused milk into the oil mixture. Pour this mixture into the flour mixture, mixing until well combined and lump-free, but don't overbeat it.

7 Pour the batter into the tin and bake for 40-50 minutes or until the cake is golden and a skewer comes out almost clean. Leave the cake in the tin for 5 minutes, then turn out onto a wire rack to cool.

8 While the cake is cooking, stir together the lemon icing ingredients, keeping some of the lemon zest for the top of the cake and adding just enough milk to give it a loose pouring consistency.

9 When the cake is completely cold, drizzle with the lemon icing and sprinkle with the reserved lemon zest.

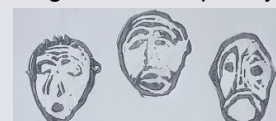
SINGERS WANTED!

Bergh Apton Arts

'UNLOCK UNEARTH'

27 & 28 January and 3 & 4 February 2024

We need just 4 more singers, if you enjoy singing and would like to be part of our latest event or would like further information, please get in touch: p.mlej@btinternet.com



With thanks...

This newsletter cannot be produced without the generosity of our sponsors who have already committed to supporting the print costs for the next 12 months.

Our thanks at this time go to:

Fanny Thursby Trust, Bergh Apton Community Arts Trust, Bergh Apton Conservation Trust, Bergh Apton Society, Bergh Apton Local History Group, Bergh Apton Parish Council, Bergh Apton Parochial Church Council, Bergh Apton Village Hall Trust, Bertram Charitable Trust, Country Holiday Cottages Norfolk Ltd, Clair and the Christopher Tenwinter Trust.

Useful Contacts

BACAT (art workshops)

Pat Mlejnecky 01508 480696

BA Conservation Trust

Tony Davy 01508 558453

Ballet

Aleksandra Zinovieva
07493073114

BA Local History Trust

Linda Davy 01508 558453

BA Society

Lynton Johnson 01508 480629

Church: Rector

Reverend Chris Ellis 01508
484174

Church: Warden

Shirley Rimmer 01508 480576

Dog Training

Tina Devlin 07810 158799

Family/Local History research

John Ling 01508 480439

Microscopy Group

Peter Sunderland 01508 493398

Pilates classes

moveswithemma.com

Singing (The La La's)

Karen Bonsell 07583968739

Village Hall Bookings

Hilary Ling 01508 480439

Yoga classes

Gemma Bains 07979 723914

Regular Events at The Village Hall

Monday	5pm on	Dog Training
Tuesday	9.30am & 10.30	Pilates
Tuesday	7pm	The La La's sing
2nd Wednesday	7.30pm	B.A. Society
3rd Wednesday	10-12pm	Coffee n Catch Up
3rd Wednesday	2-4 pm	Village Archive
Thursday	3-5pm	Ballet class
Friday	9.30am & 11.15	Yoga
1st Saturday	9-5pm	Microscopy Group
Saturday	9-12pm	Ballet class (not on 1st Saturday of the month)

Roberts & Son Printers
Litho & Digital Colour Printing
Printer Ink/Toner/Spares
Office Supplies

High Quality Colour Photocopying and Laminating Service available

T 01508 520221 F 01508 528313
E print@robertsandson.co.uk
www.robertsandson.co.uk

2-4 Bridge Street • Loddon • Norwich • NR14 6EZ



Do you know we have a Facebook Page?

'Bergh Apton Community Noticeboard'

and a website

<https://berghapton.org.uk/>

The Bergh Apton and District Society Events

Wed 23rd Aug - Guided tour and talk of Wymondham

An opportunity to see the many historic buildings of this delightful market town. The guided walk (Georgette Vale) starts at 10am, followed by lunch at The White Hart at 1pm. Car parking available at The Central Hall. £5 per head.

Wed. 30th Aug - Chet Valley Vineyard Tour and Talk

John Hemmant provides a guided tour of the vineyard with wine tasting, starts 7pm. £20 per head.

Wed. 4th Sept - Greyhound Racing with dinner at The Race View restaurant

A fun night with a two course meal and coach travel, departing BAVH at 5pm, £39.50

Fri 27th Oct - Harvest Supper and Quiz Night

Little Pigs cafe at Aldis Farm Shop, Yelverton. Quiz Master - Ray Wharton, 7pm start.

Thu 16th Nov - Thursford Christmas Spectacular

A wonderful first class show to kick-off the festive season! Cost £51 per head including coach, departing 4.45pm from BAVH

Village Diary

Aug 2023

4th 6pm	The Hare at the Orchard, Royston House
12th 7pm	Norwich Harmony - Church
16th 10-12pm	Coffee n Catch Up - BAVH
16th 2-4pm	BALHG Archiving - BAVH
19th 10am	BACT Workday. Meet at Church Field.
23rd 10.30am	BA Society Tour of Wymondham & lunch
24th 10am	BACT Workday. Meet at Church Field.
26th 10-4pm	BACAT - making dragons workshop
30th 7pm	BA Society Tour & Tasting at Chet Valley Vineyard

Sept 2023

2nd 7pm	An evening with Louis de Bernieres - Church
13th 7.30pm	BA Society talk on History of Spices by Charles Lewin - BAVH
16th 10am	BACT Workday. Meet at Church Field.
20th 10-12pm	Coffee n Catch Up - BAVH
20th 2-4pm	BALHG Archiving - BAVH
20th 7.30pm	BALHG Interactive talk on Bergh Apton School
21st 10am	BACT Workday. Meet at Church Field.
27th 7.30pm	BACT AGM
30th 9am	11Says assembly at BAVH